

Dear Friend,

Imagine having one young child and expecting a second, not having permanent housing, and looking for a job. Imagine your child was not walking yet at 18 months of age. Imagine that you hoped to find support to help you sort out some of the issues you faced in your marriage. Imagine that all of these things were happening to you at once. It is not hard to understand how some families become overwhelmed and end up underwater.

Now imagine being able to help this family find housing and early care so they could look for and accept a job, as well as connect them with a therapist and help figure out what is going on with their child who is not walking yet. This is what your support helps us accomplish every day: helping children and families have the tools they need to be successful and thrive in their communities.

We have the privilege of working with many families and children who experience both the difficulties and the joys of facing and overcoming challenges on a daily basis. The privilege lies in the fact that we are invited to participate in a family's life and help make a difference. Your support makes a difference, too. You make it possible for children to attend the Early Learning Center by providing resources for scholarship. You support professional development for staff to continue to improve their skills. You provide equipment and materials to help ensure that optimal learning occurs in all environments.

We are proud of the work we do and we know we are able to do it better because of your support. Thank you for helping make The Prouty Center such a valuable, integral part of our community.

With deep gratitude,



Chloe Learey, Executive Director



"As a former Board member and parent, I believe in the work that Prouty does for the families and the community."



"You have all given our family the gift of your care, compassion, love, and respect for our child and our family and we cannot thank you enough!"



20 Winston Prouty Way
Brattleboro, VT 05301

Phone: 802-257-7852

Fax: 802-258-2413

ann@winstonprouty.org

www.winstonprouty.org



The Winston Prouty Center for Child Development provides inclusive education and family support to promote the success of children and families.

www.winstonprouty.org

Staff

Administration

Adam Hallock
Chloe Learey
Ann Linge
Ariani Szykier

CIS

Mary Coogan
Kathy Emerson
Kathy Hallock
Jocelyn Horton
Sally Pennington
Megan Seidner
Joanne Shaw
Stephanie Thompson
Alison Wheeler

ELC

Alissa Bourque
Lynne Call
Susan Heimer
Alfred Hughes, Jr.
Katrina Irish
Kim Jacques
Eliza Lamphere
Brandy Pickering
Ylan Roy
Nancie Schwartz Angell
Maggie Sullivan
Kathy Wright

Volunteers

Dora Ferrante
Teddi Tucci

"I have been working closely with a number of your staff regarding a child receiving your services. Each and every one of them has been so professional, loving, and great to be around."



Board of Directors

Liz Richards, MD **President**
Karen Henry **Vice President**
Joanne Sprague **Treasurer**
Steve Jones **Secretary**

Natalie Audette
David Dunn
Denise Forkin
Heather Golding

336 Local families served in CIS programs, at no cost to them

42 Years Prouty has been active in Brattleboro

38 ELC families receiving financial assistance, directly or through partnerships

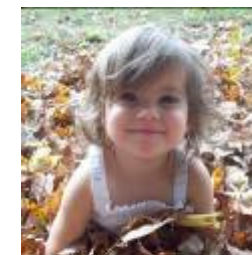
475 Professional Development training hours completed

CIS Program Highlights

- ☞ Our Early Intervention program remains a crucial resource for families with young children with developmental delays or who are at risk for a delay. This past year, our staff of six provided services to **129** young children and families.
- ☞ Our Family Support Worker has helped **29** families secure housing, employment, and/or access to health services.
- ☞ Our Nurse has assisted **178** pregnant and post-partum women with breastfeeding and other crucial health and wellness needs for them and their infants.
- ☞ We said goodbye to Martha Healey-Nelson, who has been an Early Interventionist at Prouty for nearly a decade.
- ☞ We welcomed Stephanie Thompson as Developmental Educator.



"We chose Prouty for our daughter so she can be in a place where the staff understand and accept her, where she and her friends are celebrated for their differences, and where she feels deeply that she belongs."

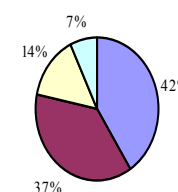


ELC Program Highlights

- ☞ We received a multi-year grant from the Canady Family Charitable Trust to allow us to systematize the social-emotional learning model that is the foundation of our educational philosophy.
- ☞ Alissa Bourque joined us as ELC Coordinator.
- ☞ The ELC was named "Best Child Care" in the 2011 Best of Brattleboro Reader's Choice Awards.
- ☞ Working closely with the Essential Early Education (EEE) program of the Windham Southeast Supervisory Union, we provided support for **10** preschool-aged children who qualify for special education services.
- ☞ The Inclusion Facilitator worked with **6** classrooms, at Prouty and in the community, to help teachers create environments where all children can be successful.



FY 2011 Expenses



- ELC \$400,901
- CIS \$364,528
- Administrative \$140,771
- Physical Plant \$70,448